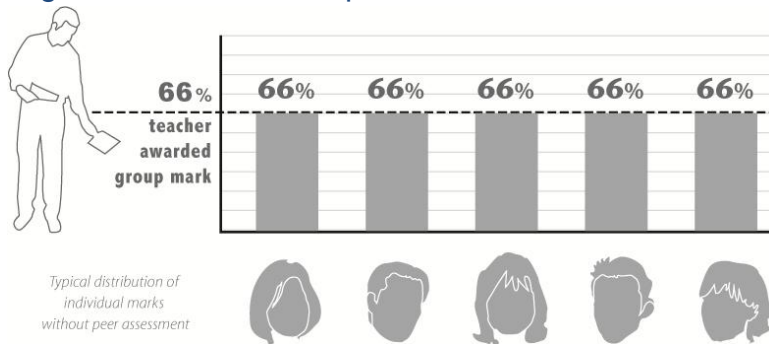


Web-based Peer Assessment

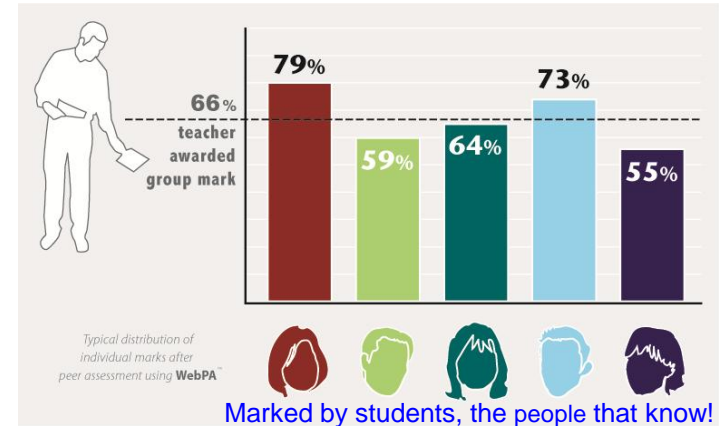
peer moderation of group work



A common criticism of assessed group work is that each student receives the same team mark, regardless of individual performance

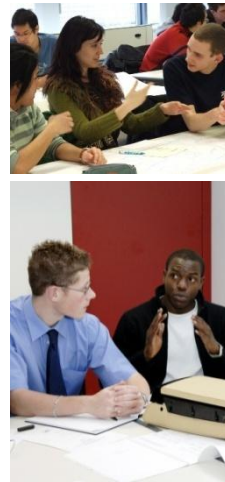


By using the **online WebPA tool** to peer assess group work, each student receives an adjusted mark



Benefits:

- It is a fair and confidential way of assessing an individuals' contribution within group work
- It is sophisticated, yet quick and easy to use for formative or summative assessment
- Flexible assessment criteria, scoring ranges and group allocation to suit the way you teach
- The generation of individual student marks is automated using a researched and trusted method
- Students are actively involved in the assessment process, reflecting on the team's performance
- It positively impacts on individual performance and team dynamics, enriching student learning



Tutors say:

"Students are much more satisfied, complaints have almost disappeared."

Dr Carol Robinson, Director, MEC, Loughborough University

"WebPA is now embedded in our first year and will be for the next five years. Typically 180-200 students every year."

Dr Bob Cherry, Comp Sci, Manchester Metropolitan University

"Overall, marking is honest and credible"

Dr Keith Pond, Business School, Loughborough University

"Use of WebPA provided a platform for a University wide service which other interested colleagues are now using"

Dr Paul Chin, University of Hull and HEA Physical Sciences Centre